



ULTIMATE BLISS OF GLOWING SHEEN



## Legends of Carpets

At Swastick Brass Corporation LLP, we are not just manufacturers; we are innovators dedicated to shaping the future of the industry while maintaining an unwavering focus on quality and sustainability. Guided by the leadership of **CEO Jay Zaveri**, we continue to forge ahead, creating products that blend functionality with elegance, ensuring a legacy of excellence for years to come.









# INSPIRATION

## *Bath*



# Save The Water







# ABOUT US

Swastick Brass Corporation LLP, operating under the distinguished brand name **PHIX-IT**, has been a pioneer in the manufacturing industry since its inception in 2016. Founded by visionary entrepreneurs **Jay Zaveri** and **Kartik Zaveri**, the company is headquartered in the industrial hub of **Jamnagar**, a city renowned for its expertise in brass manufacturing.

Specializing in **bath fittings, brass forged valves, and bathroom accessories**, Swastick Brass Corporation LLP blends cutting-edge technology with unparalleled craftsmanship to deliver products of exceptional quality. Our offerings, crafted from premium **brass** and **zinc alloy**, exemplify durability, precision, and aesthetic appeal. Driven by a passion for innovation and a commitment to excellence, we have earned the trust of customers in both domestic and international markets.









exceed boundaries  
with strong vision

### **Vision**

To establish PHIX-IT as a globally recognized brand synonymous with quality, innovation, and sustainability in the bath fittings and brass forged valve industry.

### **Mission**

To design and manufacture superior products that enhance functionality and elevate lifestyles. To prioritize eco-friendly practices in every aspect of our operations, ensuring a sustainable future. To consistently exceed customer expectations through quality, innovation, and exceptional service.



# AVAILABLE FAUCET FINISH



Gold  
+  
Z Black



Rose Gold  
+  
Z Black



Rose Gold



Gold



Z Black



## PRODUCT FEATURES :

These USPs make our products altogether more bankable



We provide 7 year Warranty  
Of Internal Cartridge Only.

\*Terms & Condition Apply



### EASY OPERATIONS

Ensures a comfortable & relaxing bathroom time.



### LASTING FINISH

Resists corrosion and wear two times longer than the industry standard



### BLOCKAGE DEFENSE

The rubber used is flexible hence; it is easy to clean any blockage or dirt.



### HIGH PROFICIENCY

High efficiency and long life of these products make them completely reliable.



### SOFT WATERFLOW

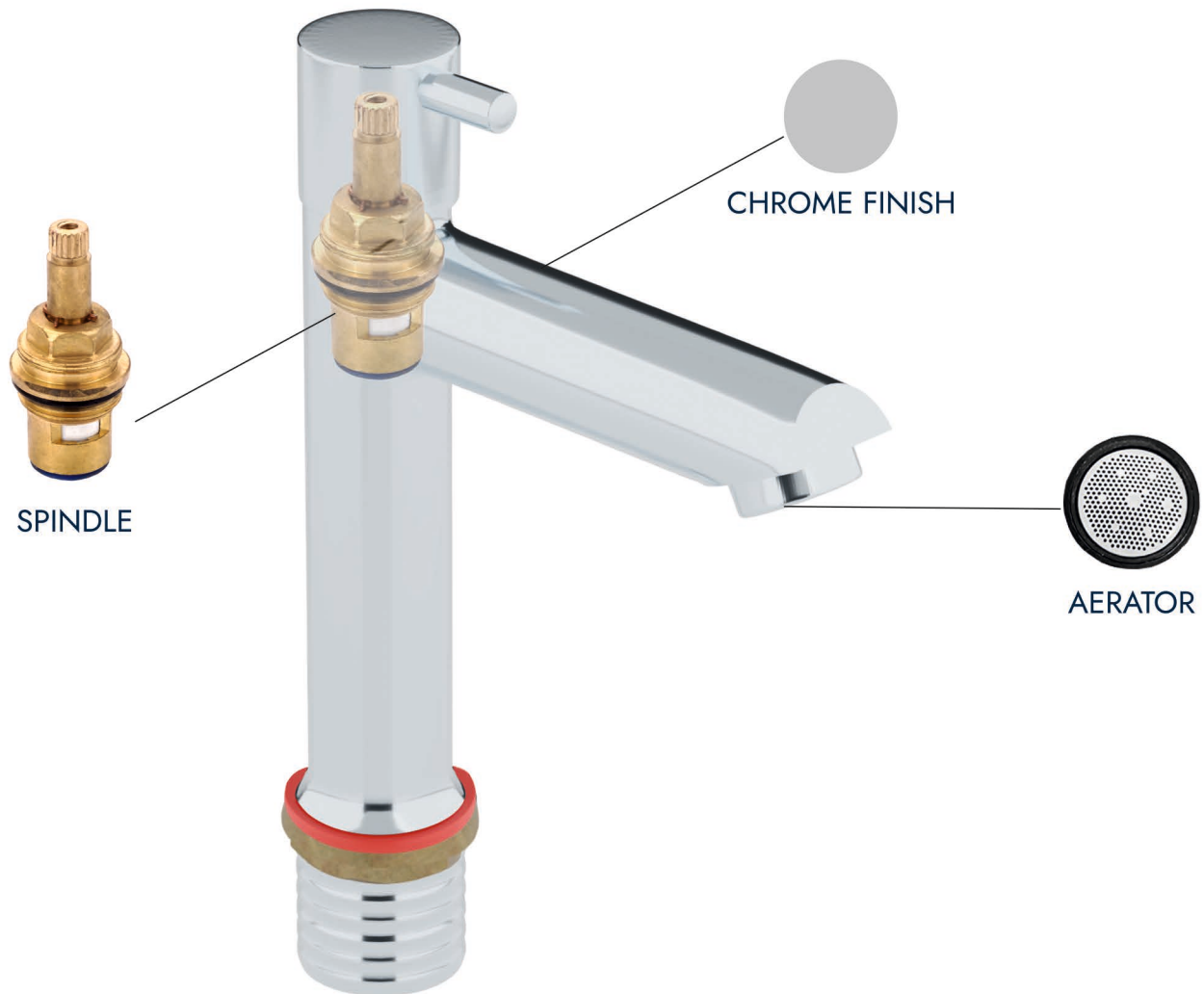
It has high shock absorption capacity along with high resistance to heat and scratch.



### DURABLE

They can stand the test of time as heat, scratches, and shocks cause the least damage to them.

# FAUCET TECHNOLOGY



The internal cartridge of all quarter-turn series is fitted with specially designed Italian ceramic discs to ensure smooth movement and free flow of water even at normal pressure. Extruded brass rod is used for all metal parts of the cartridge for flawless performance.



# TABLE OF CONTENT



ZEN

01



ALFA

03



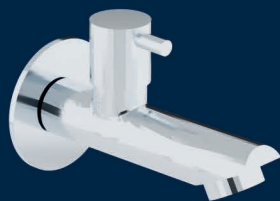
ASTRO

05



OPEL

07



STAR

09



VOLZA

11



ARISE

13



AMORE

15



**PLATINUM**

17



**TITAN**

19



**SAPPHIRE**

21



**ORION**

23



**SPARKLE**

25



**ALPHA**

27



**ACCESSORIES**

29



**ZEN**



Bib Cock



Long Body Bib Cock



Pillar Cock 3"



Pillar Cock 7"



Sink Cock



Swan Neck





2 in 1 Bib Cock



2 in 1 Angle Cock



Angle Cock



Sink Mixer



Central Wall Mixer



Wall Mixer



BODY  
BRASS



HANDLE  
ZINK ALLOY



FITTING  
BRASS



**ALFA**



Bib Cock



Long Body Bib Cock



Pillar Cock 3"



Pillar Cock 7"



Sink Cock



Swan Neck



2 in 1 Bib Cock



2 in 1 Angle Cock



Angle Cock



Sink Mixer



Central Wall Mixer



Wall Mixer



BODY  
BRASS



HANDLE  
ZINK ALLOY



FITTING  
BRASS



# ASTRO



Bib Cock



Long Body Bib Cock



Pillar Cock 3"



Pillar Cock 7"



Sink Cock



Swan Neck





2 in 1 Bib Cock



2 in 1 Angle Cock



Angle Cock



Sink Mixer



Central Wall Mixer



Wall Mixer



BODY  
BRASS



HANDLE  
ZINK ALLOY



FITTING  
BRASS



**OPEL**



Bib Cock



Long Body Bib Cock



Pillar Cock 3"



Pillar Cock 7"



Sink Cock



Swan Neck



2 in 1 Bib Cock



2 in 1 Angle Cock



Angle Cock



Sink Mixer



Central Wall Mixer



Wall Mixer



BODY  
BRASS



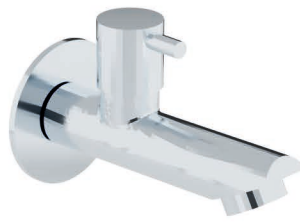
HANDLE  
ZINK ALLOY



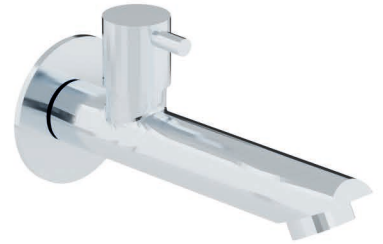
FITTING  
BRASS



**STAR**



Bib Cock



Long Body Bib Cock



Pillar Cock 3"



Pillar Cock 7"



Sink Cock



Swan Neck





2 in 1 Bib Cock



2 in 1 Angle Cock



Angle Cock



Sink Mixer



Central Wall Mixer



Wall Mixer



BODY  
BRASS



HANDLE  
ZINK ALLOY



FITTING  
BRASS



**VOLZA**



Bib Cock



Long Body Bib Cock



Pillar Cock 3"



Pillar Cock 7"



Sink Cock



Swan Neck



2 in 1 Bib Cock



2 in 1 Angle Cock



Angle Cock



Sink Mixer



Central Wall Mixer



Wall Mixer



BODY  
BRASS



HANDLE  
ZINK ALLOY



FITTING  
BRASS



# ARISE



Bib Cock



Long Body Bib Cock



Pillar Cock 3"



Pillar Cock 7"



Sink Cock



Swan Neck





2 in 1 Bib Cock



2 in 1 Angle Cock



Angle Cock



Sink Mixer



Central Wall Mixer



Wall Mixer



BODY  
BRASS



HANDLE  
BRASS



FITTING  
BRASS



Pillar Cock 3"



Angle Cock



Sink Cock



Swan Neck



2 in 1 Bib Cock



2 in 1 Angle Cock

**AMORE**



Wall Mixer



BODY  
BRASS



HANDLE  
BRASS



FITTING  
BRASS





# PLATINUM



Bib Cock



Long Body Bib Cock



Pillar Cock 3"



High Neck Pillar Cock



Sink Cock



Swan Neck





2 in 1 Bib Cock



2 in 1 Angle Cock



Angle Cock



Wall Mixer



BODY  
BRASS



HANDLE  
BRASS



FITTING  
BRASS



**TITAN**



Bib Cock



Long Body Bib Cock



Pillar Cock 3"



Angle Cock



Sink Cock



Swan Neck



2 in 1 Bib Cock



2 in 1 Angle Cock



Wall Mixer



BODY  
BRASS



HANDLE  
BRASS



FITTING  
BRASS





# SAPPHIRE



Bib Cock



Long Body Bib Cock



Pillar Cock 3"



High Neck Pillar Cock



Sink Cock



Swan Neck





2 in 1 Bib Cock



2 in 1 Angle Cock



Angle Cock



Wall Mixer



BODY  
BRASS



HANDLE  
BRASS



FITTING  
BRASS



# ORION



Bib Cock



Long Body Bib Cock



Pillar Cock 3"



Angle Cock



Sink Cock



Swan Neck



Wall Mixer



BODY  
BRASS



HANDLE  
BRASS



FITTING  
BRASS





# SPARKLE



Bib Cock



Long Body Bib Cock



Pillar Cock 3"



High Neck Pillar Cock



Sink Cock



Swan Neck





2 in 1 Bib Cock



2 in 1 Angle Cock



Angle Cock



Wall Mixer



BODY  
BRASS



HANDLE  
BRASS



FITTING  
BRASS



# ALPHA



Bib Cock



Long Body Bib Cock



Pillar Cock 3"



Angle Cock



Sink Cock



Swan Neck



2 in 1 Bib Cock



2 in 1 Angle Cock



Wall Mixer



BODY  
BRASS



HANDLE  
BRASS

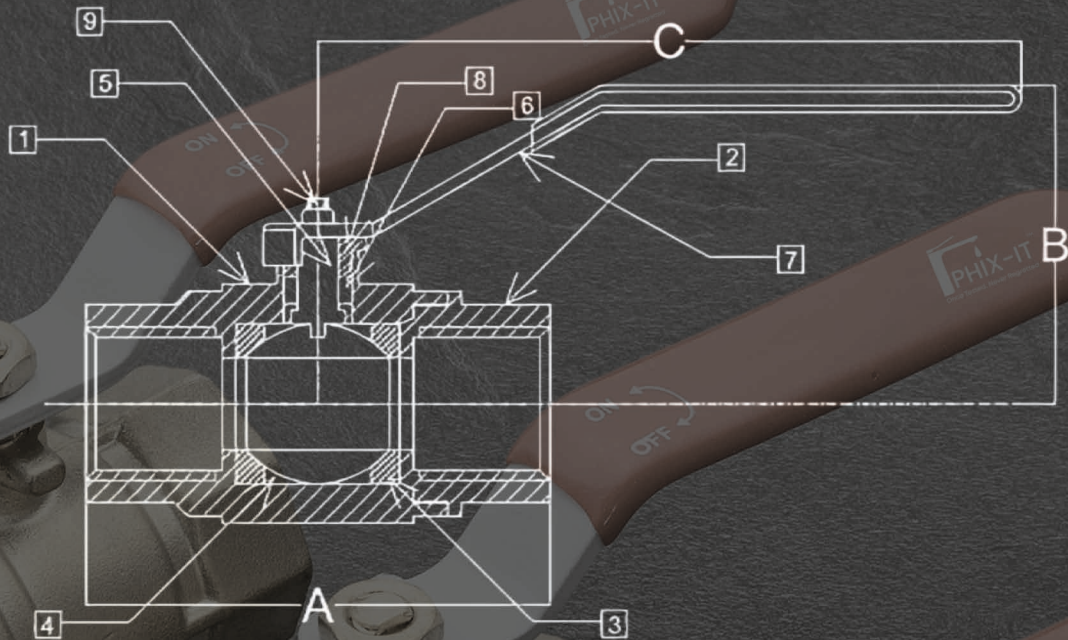


FITTING  
BRASS





# Ball Valve Specification



**DESIGN CHART**

Size	1/2"	3/4"	1"	1.1/4"	1.1/2"	2"
A	49	58	67	74	87	104
B	50.5	55.5	65.5	72.5	79	97
C	87	111.5	109	123.5	141	157

## FEATURES

- ✓ High pressure application - Compatible
- ✓ Corrosion resistant
- ✓ Low turning torque
- ✓ It is easy to install

**SPECIFICATION CHART**

Code	Item Name	Material
1	Body	Forged Brass
2	Cap	Forged Brass
3	Ball	Brass
4	Ball Set	PTFE
5	Stem	Brass Rod
6	Stem Seat	PTFE
7	Nut	Brass
8	Handle	Mild Steel
9	Cup Washer	Mild Steel
10	Screw	Mild Steel



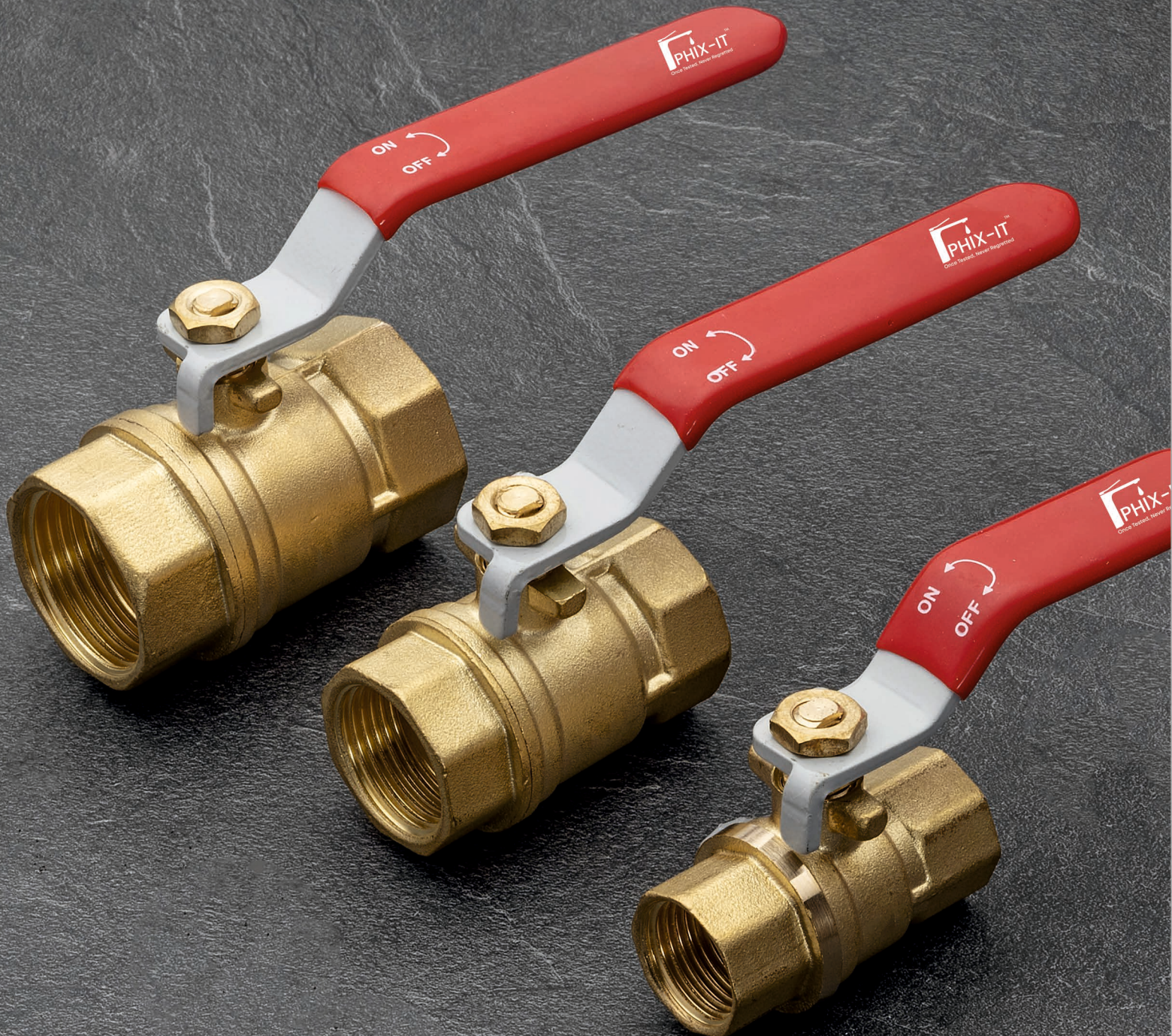
Leakage Proof



Long-life Durability



## Forging Brass Ball Valve (F/F)



### Available Sizes

1/4"	3/8"	1/2"	3/4"
1"	1.1/2"	1.1/4"	2"



# Forging Brass NRV (Check Valve) Horizontal



## Available Sizes

1/2"	3/4"	1"	1.1/2"
1.1/4"	2"		



# Forging Brass NRV (Check Valve) Horizontal - Heavy



## Available Sizes

1/2"

3/4"

1"



# Forging Brass NRV (Chek Valve) Vertical



## Available Sizes

1/2"	3/4"	1"	1.1/2"
1.1/4"	2"		



# Forging Brass NRV & Strainer

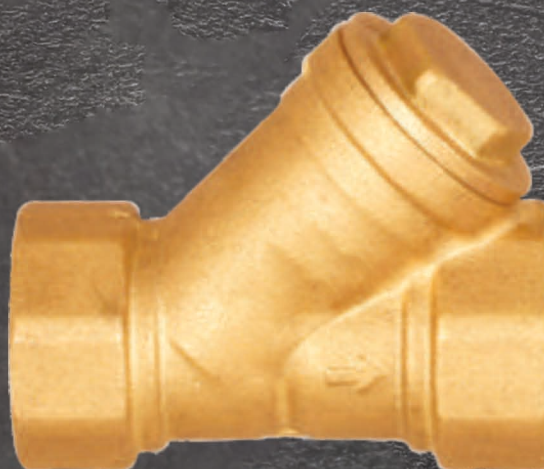


## Available Sizes

1/2"

3/4"

1"



## Available Sizes

1/2"

3/4"

1"



# Forging Brass Foot Valve



## Available Sizes

1/2"	3/4"	1"	1.1/2"
1.1/4"	2"		



## Forging Brass

### NRV / Angle Cock / Spindle



#### Available Sizes

1/2"

3/4"

1"



Z-Type Spindle 1/2"



Concealed Spindle 1/2"



Flush Spindle 3/4"



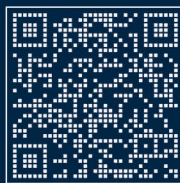


Once Trusted, Never Regretted

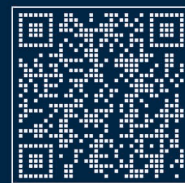
**SBI** Swastik Brass Corporation LLP  
Manufacturer of Brass Forged Valves and Bath Fittings

+91 99099 31136 | +91 99790 89762

✉ info@swastikbrassind.com | jay@swastikbrassind.com



📍 Plot No. 4114, Dared Phase - III, Jamnagar - 361 004.



🌐 [www.swastikbrassind.com](http://www.swastikbrassind.com)

